



# Mālamalama Waldorf School



## News Notes March 2026

### On the Calendar

March 5th 🧡🍿  
Class 6/7 Play 5:30 pm

March 6th 🧡🍷🍴  
Class 6/7 Play  
dinner at 5pm, play at 6pm

March 6th, 13th, 23rd & 30th  
Spring Faire Committee Meeting  
12:45-2pm

March 10th  
Open House 8:30am-10:00am

March 12th  
Parent Hui Meeting 2:45-4:15  
**Early Enrollment Ends**

March 16th-20th  
SPRING BREAK

March 27th  
**Walk-A-Lap Shipman Park**  
8am-noon

### Visiting Eurythmist Needs Housing

We are excited to announce that eurythmy teacher and friend of the school, Mikio Shioya, will be teaching eurythmy classes to children from April 1st to April 7th. We are looking for someone who has space available for him to stay, either through donation or through a discounted rate. Please contact [vernon@hawaiiwaldorf.org](mailto:vernon@hawaiiwaldorf.org) if you can help. Mahalo!

### News from the Office



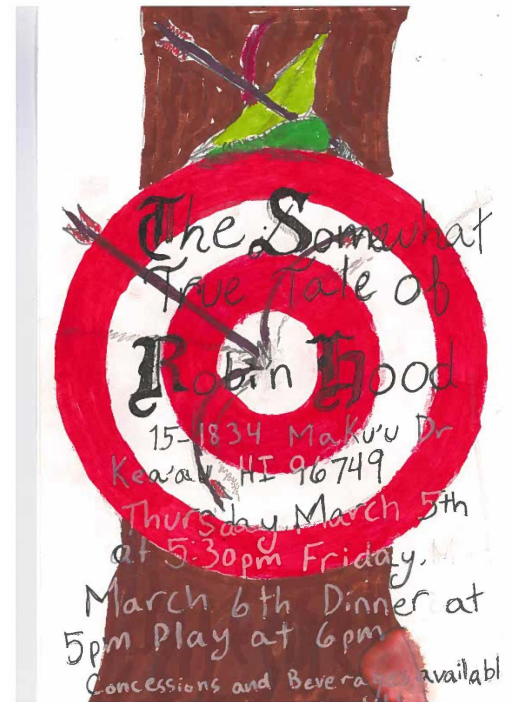
Please follow us

Join Waldorf Connect FB group  
It's a good 'community board' for parents to connect in a closed group.

**Early Enrollment Ends March 12**  
**\$650 discount for Grades 1-8**  
**Secure your child's spot in Kinder and Grades**  
**Tuition Assistance Applications Due April 1**

**Mark your Calendar- Spring Faire April 18**

**43rd Annual Walk-A-Lap**  
Friday, March 27 | Shipman Park  
We are preparing for our beloved Walk-A-Lap, a joyful morning of movement, community, and school spirit. This event raises essential funds for campus improvements, needed storage, and tuition assistance.  
Our goal is for each child to raise \$300 in pledges. Every lap walked and every pledge gathered strengthens Mālamalama.  
Sign up to support the event here:  
<https://www.trackitforward.com/site/985271/event/1206297>



"The spirit of springtime is one of renewal and rebirth, a time to awaken our senses to the beauty and magic of the natural world. - Rudolf Steiner, founder of Waldorf education.



## From Administration

Aloha Mālamalama ‘Ohana,

As we move into March, the strong rhythms established earlier in the year are supporting deeper academic work, growing independence, and strengthened friendships across campus.

The Grade 6 and 7 Class will take the stage with The Somewhat True Tale of Robin Hood on March 5 and 6. We warmly invite our community to attend and celebrate the culmination of their hard work.

Our Open House on March 10 is a wonderful opportunity for prospective families to learn about our programs and meet our faculty. Please share this event with friends and family who may be interested in joining our Mālamalama ‘ohana.

We will also host a one-day accreditation team visit on March 12 with representatives from AWSNA and HAIS/WASC. We hold this as an opportunity for reflection and continued strengthening as we serve our community.

Early re-enrollment for Kinder and Grades 1 through 8 ends March 12. Grades 1–8 receive a \$650 tuition discount, and early enrollment secures your child’s spot. Tuition assistance applications for the 26/27 school year are due April 1.

Spring Break will take place March 16 through March 20. We wish your family a joyful and restful break and look forward to welcoming students back on Monday, March 23.

With appreciation,  
Administration  
Mālamalama Waldorf School

## Notes from the Parent Hui

Your involvement in the Hui makes all the difference—join us!!

### Important Dates to Remember

Potato Tuesday: March 10

Preorder forms due: March 2

Parent Hui Meeting: March 12

Spring Faire Committee Meetings: Fridays, March 6 and March 13

### Potato Tuesday – March 10

Join us after school on March 10 for Potato Tuesday. Kindly submit preorder forms to the office by March 2 so preparations can unfold with care. Come enjoy a bounty of tasty toppings and the simple joy of sharing food together.

### Spring Faire Committee & Plant Sale

With spring on the horizon, all are warmly welcome to gather with the Spring Faire Committee as we shape this year’s celebration. We will meet Friday, March 6 and March 13 at 12:45 pm at the picnic tables outside the Grade 1 classroom.

If your garden has something to share, we would be grateful for plants, saplings, or trees to nurture our Plant Sale and support the Faire.

### Faculty Meals

With heartfelt gratitude, we thank Class 4/5 for nourishing our faculty with lovingly prepared meals during February’s meetings. In March, this act of care will be carried forward by Class 8. Please visit Track It Forward for sign-ups and details.

### Next Parent Hui Gathering – March 12

Join us on Thursday, March 12, from 2:45 to 4:15 pm in the Hui Lilikoi yard for our next Parent Hui meeting. All are welcome. Your presence and perspective help our community thrive.

If you have any questions about Parent Hui or ways to get involved, please email [parent\\_hui@hawaiiwaldorf.org](mailto:parent_hui@hawaiiwaldorf.org).

*“Each had a little work to do before spring could come.”*

– Sibylle von Olfers, *The Story of the Root Children*





## Ten Toes Bentos!

The 8th Grade has begun a bento business to fundraise for our trip to Kaua'i. We are inviting classes one by one to participate as we determine our capacity as a class of 7 students. Right now, we are inviting Grades 1 and 2/3 to participate along with their siblings. When we open it up to more classes, we will send flyers home with your child.

\$6 bentos can be ordered from the office. Payment is due on Fridays and lunch is delivered on Mondays. All food is organic, vegetarian (but usually includes egg), and gluten-free.

Mahalo for your support!

-Mr. Dewey

## Panina Makahiki: Tuesday March 10th

**8am-9:30am**

The season of Lono is closing, opening the season of Kū. Join us as we celebrate the coming of a new year and the building of our Kuahu, strengthening Mālamalama as a Wahi Pana (sacred place). Bring pohaku from your 'aina, a chair, and an umbrella. Following our ceremonial procession and offerings, each class will share a song or poem.

For those that are interested in preparing the Kuahu, foundation laying will occur on March 7th. Contact [vernon@hawaiiwaldorf.org](mailto:vernon@hawaiiwaldorf.org) if you are interested in helping.

## Date Night Childcare! April 2nd and April

**7th: 5-8pm**

Want to get away for a dinner date and need childcare? The 8th Grade is here to help!

On Thursday April 2nd the 8th Grade is offering childcare for K-3rd Grade. Your child will receive dinner, enjoy watching the 4th/5th Play, and complete a craft project.

On Tuesday April 7th from 5-8pm, the 8th Grade is offering childcare for K-5 children, including dinner, crafts, and story.

\$30-\$50/child per night. Discounts available for siblings. Secure your spot by paying and registering in advance at the office. Space is limited!

Mahalo for supporting the 8th Grade's trip to Kaua'i!

## TEN TOES BENTOS

AN 8<sup>th</sup> GRADE TRIP FUNDRAISER  
\$6 ORDER DUE FRIDAYS TO THE OFFICE  
DELIVERED MONDAYS FOR LUNCH



## Aloha from the Garden,

Things are blooming in the garden, and our pavilion now has a roof! The shed still needs a door and a ramp, and if anyone is willing to help with that, I would be grateful for the support. Please email [eric@hawaiiwaldorf.org](mailto:eric@hawaiiwaldorf.org) if you are interested.

Mahalo to John Milcarek, Aspen Douglas, and Udi Butler for helping get the roof on. It was a beautiful afternoon, and we were able to get it all done.

We are currently seeking proposals from anyone in the catchment business to submit a quote for the purchase and installation of a 5,000-gallon catchment tank between the new shed and the pavilion near the garden. The tank would be fed by the roofs of both the shed and the pavilion. If you are interested in submitting a proposal, please contact me for more details.

We are also looking for someone with heavy equipment to help knock down some trees and flatten additional areas for planting. In addition, we need assistance erecting a larger fence around the new garden buildings. If you have access to equipment like this or are interested in helping, please let me know.

Hope the bees are buzzing, your flowers are beautiful, and your vegetables are tasty.  
Mahalo from the garden

# Mālama Makali'i Ocean Festival 2026



Classes 4/5, 6/7, and 8 had the honor of attending the Mālama Makali'i Ocean Festival 2026. In preparation, our students created a ho'okupu with care and intention. It was presented during the festival and later brought aboard the Makali'i, a traditional double-hulled voyaging canoe built on Hawai'i Island in 1995 and guided by ancestral navigation. The opening ceremonies were powerful, and our students witnessed a living tradition rooted in voyaging, stewardship, and community. Mahalo nui to Uncle Des and the Mālama Makali'i crew for welcoming our keiki into this experience.



### 📣 Monthly NewsNotes Advertising Opportunity! 📣

Promote your business in our upcoming Monthly NewsNotes. Whether you have a small local business, offer services, or have a special event to share, this is your chance to reach out to our vibrant community.

Cost: \$20 per month

Submission Deadline: 20th of the month before the month of advertisement

#### How It Works:

Submit your information to

[info@hawaiiwaldorf.org](mailto:info@hawaiiwaldorf.org) by the 20th of the preceding month.

# Pau Hana Pet Resort

## Services:

**DOG BOARDING**

**DROP-IN VISITS**

**DOGGY DAYCARE**

**EXIT BATHS**



**Book Today!**

**808-966-3225**

[www.pauhanapetresort.com](http://www.pauhanapetresort.com)



Join Aunty Melissa for the musical theater production of Moana this spring break! At Aunty's 13th Ave Music School in HPP.

Visit [www.auntysmusic.com](http://www.auntysmusic.com) for more info, or text Melissa at (517) 410-5304.

### Student Leadership Spotlight

Our 8th grade student, Kai Dewey, is hosting a free Basketball Clinic for students in Grades 4-8. Kai has taken the initiative to organize this opportunity to share his love of the game while helping younger students build skills, teamwork, and confidence on the court. The clinic is free to attend, with optional donations welcomed by Kai.

## Kai's Basketball Clinic

- Sunday, March 8th
- Light Snack Provided
- 2-5pm
- Free! (Donations Welcome)
- Please Bring Water Bottle and Basketball (if can)
- Grades 4-8
- Meet at Billy Kenoi Gym in Pāhoa
- Learn Basketball Skills, Teamwork, and Strategy!
- RSVP to [kaihsiehdewey@gmail.com](mailto:kaihsiehdewey@gmail.com)



## Class 8

Aloha 8th Grade Families,

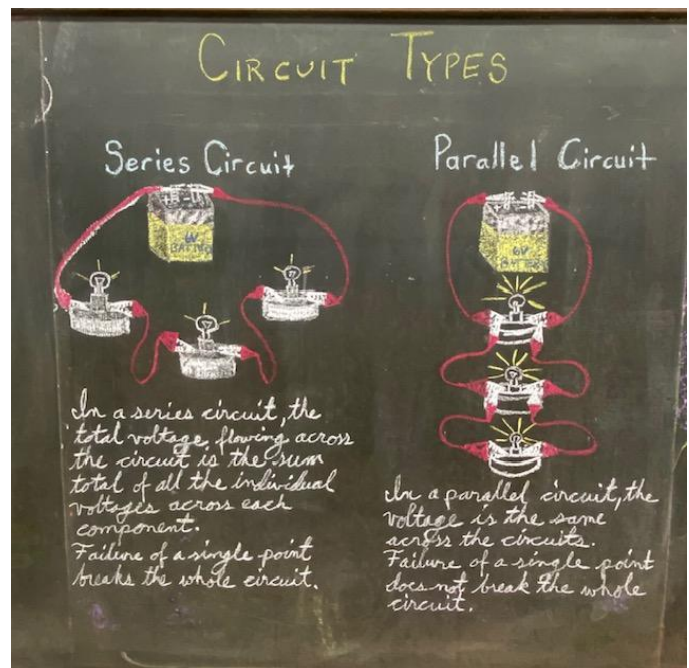
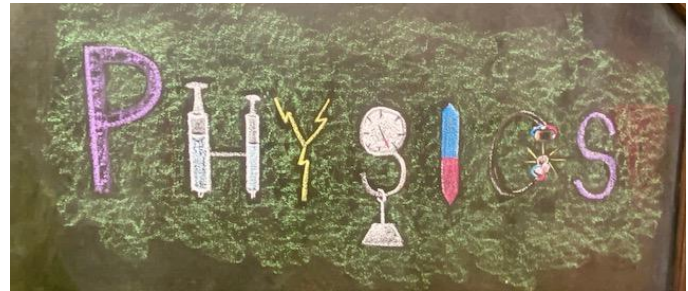
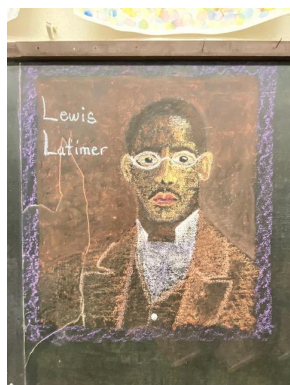
Our last month of physics was a lot of fun as we dove into the depths of water pressure and displacement, the lifting force of air pressure, and the electrifying revelations of circuitry and electromagnetism. The students also began to see how math and physics work together in understanding some of the laws of the physical world, including formulas for pressure, density, and electrical current. They traveled through time hearing the biographies of Lewis Latimer and Hedy Lamarr. Next week, we turn our attention to a new block: short story.

The students should continue reading their new books daily so that they can finish by the time we return from Spring Break.

We are now in the final stretch of working on 8th Grade projects. If they haven't gotten much experience with their project yet, please help them put in some extra hours now. They should also make use of the library to supplement their project with research. It won't be long until they will need to begin putting together their presentation speeches and visual aids.

Mahalo to all who helped with our trip to Kapa'a and Kawaihae. It was a memorable experience for all!

With Aloha,  
Mr. Dewey





Greetings from the 6th and 7th grade.

We have been delving into the heart of the matter. With our hearts on our sleeves, we are exploring the depths of the human body. We've started with the circulatory system and are moving into the digestive and reproductive systems in the next couple of weeks. Classes really enjoy drawing the heart and the different aspects of the heart and learning about the heart not only as a muscle in the body, but as a receptor of feeling.

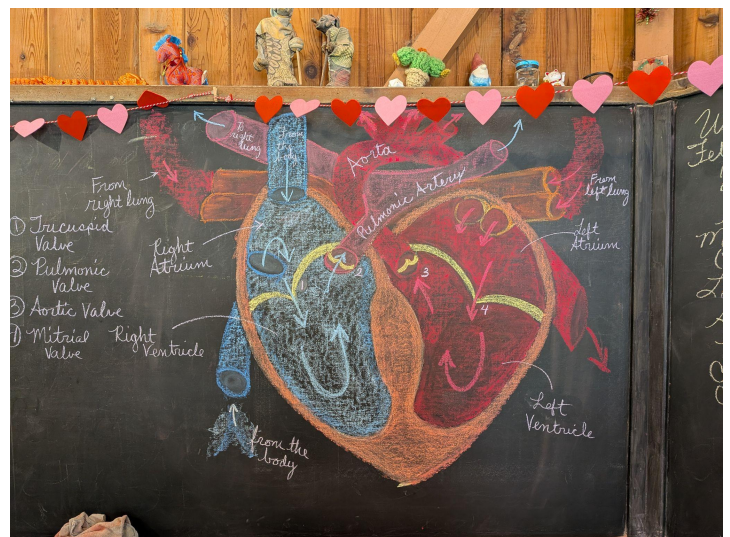
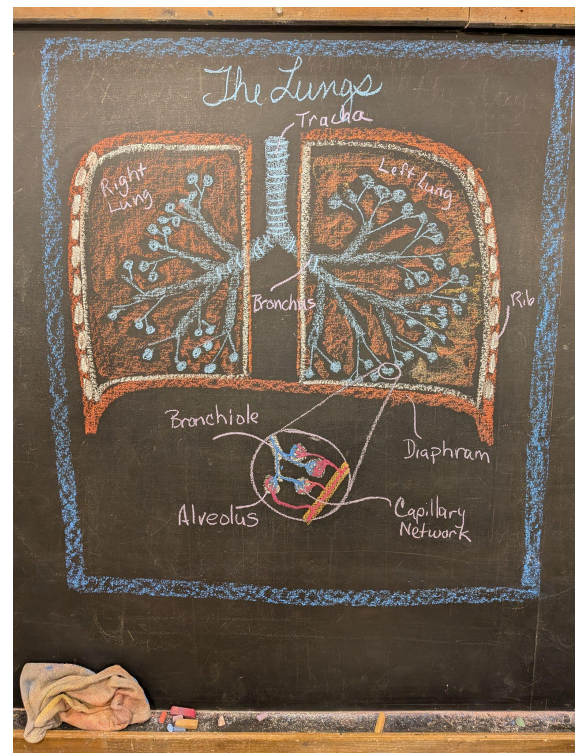
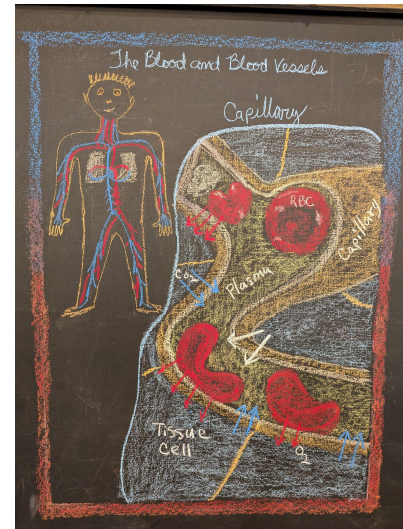
We are working diligently on our play. We'll stage it on March 5th and 6th at 5:30 and 6:00 p.m., respectively. We will have dinner on Friday, as well as a fundraiser for the class. We will be selling concessions on Thursday and Friday night. Both are fundraisers for the class end-of-the-year trip. Thank you for supporting our trip next year. Our play, called *The Somewhat True Tale of Robin Hood*, is a ridiculous comedy of our beloved Robin Hood hero.

In addition to fundraising for our 7th and 8th grade trip with our play, we have begun discussing what we're going to do, where we're going to go, and additional fundraisers to help us get there. It's all very exciting.

In April we will be attending the Medieval Global Games at Kona Pacific Public Charter School. We will be going over and having an overnight on the 16th and 17th of April. So we are beginning to practice our medieval dances and our javelin and archery skills. We're also practicing our circus arts: walking on stilts, juggling, twirling plates, and tumbling.

We hope you can come see our production of Robin Hood on March 5th and 6th.

Looking forward to spring,  
The 6th and 7th grade class



## Class 4/5



Dear Class Four/Five,

There is a spring feeling with a crisp coolness to the air in the morning as the students arrive like little butterflies, flitting here and there, eager to see their friends. Their cheerful greetings to each other bring a smile to my heart. They sweetly begin each day with their familiar routine of hanging their backpacks and then hanging out with their friends. They are getting excited about our class play and often work together practicing their lines. They are having so much fun that the days seem to blink by. Unfortunately, the students are not just sharing love but also colds and flus. Due to an unusual number of students out sick, we have decided to postpone our play performance of *Gilgamesh* until Thursday, April 2 at 5:30pm. In addition to our evening performance on April 2, the students will also present their play for the entire school on Wednesday, April 1 at 9:00 a.m. Parents are welcome to join us for this daytime performance if they would like to attend. We will also have a visiting eurythmy teacher here at that time as well!



We have just completed a block about Mesopotamia and ancient Persia. We looked at the geography of both, as well as their cultures and their contributions and inventions during that turning point in civilization. Their legends, beliefs, and religions painted rich pictures for the students and gave them glimpses into the lives of people living then. The story of our class play is from the story of Gilgamesh. It is believed to be the oldest written story, as it was written on clay tablets in cuneiform thousands of years ago in Mesopotamia.



We are now beginning a short two-week drama block in which we will focus on practicing our play, preparing costumes and sets, and bringing the story to life. During that block will also be the closing ceremony for Lonomakahiki on Tuesday, March 10. Parents are warmly welcome to join us. We will begin right after drop-off. Please bring a pohaku, a stone, for the altar being built.



The week of March 16–20 is Spring Break. When we return on March 23, we will begin a block about ancient India as well as fine-tune our play. Though it may seem a way off, there are other events sprinkled within, including our annual Walk-a-Lap fun fundraiser on March 27. Please encourage your child to collect pledges from friends, family, and neighbors. This is one of our biggest fundraisers.



It is a great joy to greet the children each day. Mahalo for sharing them with me,  
Ms. Jenkins



Dear Parents,

Warm greetings from our classroom. It has been a full and meaningful month, rich with academic work.

We are currently in a long division math block, working carefully through the steps of dividing larger numbers. The students are learning to approach each problem in an orderly and thoughtful way, strengthening both their concentration and number sense. Alongside this work, we continue to practice the multiplication tables, which are an important foundation for confidence and success in long division.

We have also continued learning cursive handwriting. The children are approaching this work with care and enthusiasm as they discover the flowing movement of the letters. Our form drawing lessons support this new skill by strengthening balance, rhythm, and fine motor control. Through the practice of lines, curves, and symmetrical forms, the students develop the coordination and spatial awareness that help cursive writing become natural and beautiful.

One of the highlights of the month was our Valentine's Day Fancy Tea. The children dressed beautifully and gathered around the table to share treats and warm drinks together. It was a lovely time filled with friendship and joy, and the students practiced their best manners. I witnessed polite conversation, careful serving, and thoughtful gratitude. It was a special and memorable celebration of kindness and community.



Throughout the month we have been working consciously with the qualities of reverence and simplicity in our classroom life. These are values we practice in small daily ways, such as caring for our materials, listening attentively, and moving thoughtfully. We have explored these ideas through a traditional Shaker song that we have been singing together:

### *Simple Gifts*

Traditional / Shaker

*'Tis the gift to be simple, 'tis the gift to be free  
'tis the gift to come down where you ought to be  
And when we find ourselves in the place just right  
'Twill be in the valley of love and delight.  
When true simplicity is gained  
To bow and to bend we shan't be ashamed  
To turn, turn will be our delight  
'Till by turning, turning we come round right.*

This song has become a gentle thread running through our days, reminding us that there is beauty in simplicity and in doing things with care.

I would like to extend heartfelt thanks to everyone who supports our classroom in so many ways. Thank you to those who helped give the classroom a wonderful cleaning at the beginning of the month. Thank you to our reading group volunteers for the time and care you give to the children each week. Thank you to the families who provided treats and drinks for our tea. Your generosity helps make these experiences possible.

Thank you, as always, for the many ways you support our class and our work together.

Warmly,

Ms. Koors

# From the Kinderhale



Dear Kinderhale 'Ohana,

In the month of March, we find the first day of Spring. March 20th is the Spring Equinox and brings the light of day and the darkness of night into balance, marking the renewal of the Sun as it moves toward its full glory of warmth and light. Daylight hours begin to grow longer, and plant life responds with vigor and growth. Green grass grows fast, flowers bloom, and bees and butterflies are busy with their work.

The children feel the quickening energy of the earth too. As their energy levels rise, it can be good to begin to think about ways in which you can constructively meet the Spring energy within. It is a great time to grow a garden or explore the natural world through hikes and visits to special places. The beaches of our island offer a sensory experience full of beauty and power that can be humbling. A clear rhythm after the school day ends can channel the children's energy into purposeful activities, moments of rest, chores, and play.

Happy Spring!

The Kinderhale Teachers



**"The sun with loving light  
Makes bright for me each day."**

— Rudolf Steiner

